

ESSENTIAL RESEARCH METHODOLOGY FOR ANAESTHESIA

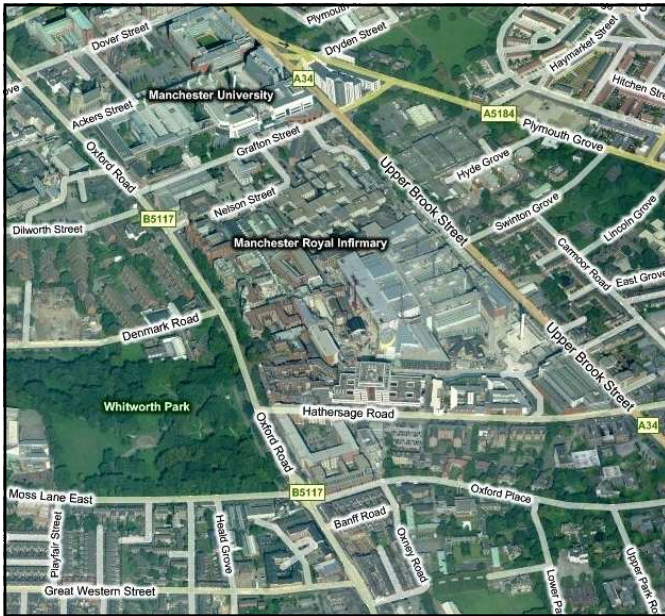
Friday 30 March 2012

This is a one day, intensive course covering material that is not part of mandatory training. Examples will be drawn from real-world research in anaesthesia. 5 CPD points have been awarded for this course by the RCOA.

Venue

The course will be held at the following location:

**Seminar Room
Department of Anaesthesia
5th Floor, St Mary's Hospital
Manchester, M13 9WL**



Refreshments

Coffee, tea and biscuits will be available.

Lunch

Lunch will be provided free of charge to all course participants. If you have any special dietary requirements please indicate on the booking form.

Accommodation

The course is non-residential. If accommodation is required, a hotel list is available on request. Please note, however, that participants are responsible for their own hotel bookings and payments.

Parking

We aim to secure reduced rate parking for all candidates on the Research Methods course. You will be emailed about this in due course.

Programme

This will be e-mailed to you prior to the course commencing.

**CLOSING DATE
FOR APPLICATIONS**

16 March 2012

Research Methods Booking Form

Surname:

Forenames:

Address:

Daytime Tel No:

Email:

Hospital:

I am a (please ring): TRAINEE / CONSULTANT

If you are a TRAINEE are you on the north west regional SPR rotation?: YES / NO

Special Dietary Requirements: YES / NO
If yes please indicate

REGISTRATION FEE
Trainees £75* / Consultants £100**

* Trainees: this is an approved course and the fee should be covered by the STC for rotational trainees.

** Consultants: cheques should be made payable to the 'University of Manchester' and included with this form.

Please return this completed form to:

John Prince, Course Co-ordinator
Department of Anaesthesia
5th Floor, St. Mary's Hospital
Manchester, M13 9WL

Tel: 0161 276 4558
Email: john.a.prince@manchester.ac.uk